

# Specification

Flex led strip for LLS 1.0, LLS 2.0, GLS1.0



## CONTENTS

◆	Introduction.....	3
◆	Technical Parameter.....	4
◆	Performance Parameter.....	6
◆	Package.....	10
◆	Precautions.....	11

## Introduction :



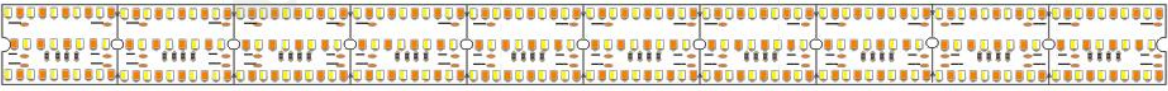
## Strip for Profile :

Designed to match the profile, this strip provides a wide range of color temperature and two CRI by using the SMD2835 LED beads and a highly mechanized manner SMT. Its lighting effect can reach an optimal state due to the professional lighting design and reasonable arrangement of LED beads. There are two kinds of strips -- flexible strip and rigid modular -- which can be applied in different luminaires. In addition, the length of rigid modular is customizable to match various fixtures with different length.

**Technical Parameter(1):**

<p><b>D8280-24V</b> <b>-15mm</b></p>	
<p><b>D8280-24V</b> <b>-20mm</b></p>	
<p><b>D8280-24V</b> <b>-34mm</b></p>	
<p><b>D8420-24V</b> <b>-59mm</b></p>	
<p><b>D8560-24V</b> <b>-85mm</b></p>	

**Technical Parameter(2):**

<p><b>D8560SWW</b> <b>-24V-3</b> <b>4mm</b></p>	
---	--

### Performance Parameter (1) :

Series ( Length )	Order No.	CCT	Lumen ( Lm/PC )	CRI	LED Beads (Pcs/M)	Voltage ( V )	Rated Current ( A/M )	Rated Power ( W/M )	Cutting ( mm/Unit )	Suitable for
D8280-24V -15mm	D82802415NO-8LWCS A050WC0250	2200-2400K	2400	>80	280	24	0.85	20	50	LS3360
	D82802415NO-8SWCS A050WC0250	2600-2800K	2500							
	D82802415NO-8WWCS A050WC0250	2800-3200K	2600							
	D82802415NO-8NWCS A050WC0250	3800-4200K	2700							
	D82802415NO-8DWCS A050WC0250	4800-5200K	2700							
	D82802415NO-8WCSA 050WC0250	5800-6500K	2550							
D8280-24V -20mm	D82802415NO-9SWCS A050WC0250	2600-2800K	2100	>95	280	24	0.85	20	50	LS4067 LE5535 LC12843 LS3535 LS3667 LE4932
	D82802415NO-9WWCS A050WC0250	2800-3200K	2200							
	D82802415NO-9NWCS A050WC0250	3800-4200K	2300							
	D82802415NO-9DWCS A050WC0250	4800-5200K	2300							
D8280-24V -20mm	D82802420NO-8LWCS A050WC0250	2200-2400K	2400	>80	280	24	0.85	20	50	LS4067 LE5535 LC12843 LS3535 LS3667 LE4932
	D82802420NO-8SWCS A050WC0250	2600-2800K	2500							
	D82802420NO-8WWCS A050WC0250	2800-3200K	2600							
	D82802420NO-8NWCS A050WC0250	3800-4200K	2700							
	D82802420NO-8DWCS A050WC0250	4800-5200K	2700							
	D82802420NO-8WCSA 050WC0250	5800-6500K	2550	>95	280	24	0.85	20	50	LT60
	D82802420NO-9SWCS A050WC0250	2600-2800K	2100							
	D82802420NO-9WWCS A050WC0250	2800-3200K	2200							
	D82802420NO-9NWCS A050WC0250	3800-4200K	2300							
	D82802420NO-9DWCS A050WC0250	4800-5200K	2300							

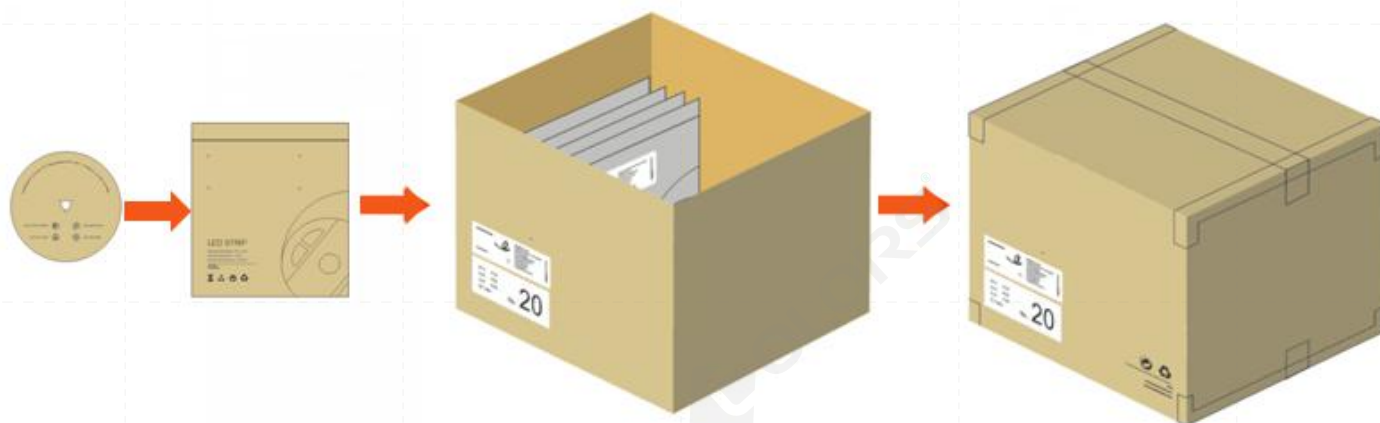
**Performance Parameter (2) :**

Series ( Length )	Order No.	CCT	Lumen ( Lm/PC )	CRI	LED Beads (Pcs/M)	Voltage ( V )	Rated Current ( A/M )	Rated Power ( W/M )	Cutting ( mm/Unit )	Suitable for
D8280-24V -34mm	D82802434NO-8LWCS A050WC0250	2200-2400K	2950	>80	280	24	1.05	25	50	LS5470 LS5470(F) LE6935 LE6935(F) LR5535(A) LR5535(B) LS4932 LS4970 LS5050 LE6332
	D82802434NO-8SWCS A050WC0250	2600-2800K	3100							
	D82802434NO-8WWCS A050WC0250	2800-3200K	3200							
	D82802434NO-8NWCS A050WC0250	3800-4200K	3250							
	D82802434NO-8DWCS A050WC0250	4800-5200K	3250							
	D82802434NO-8WCSA 050WC0250	5800-6500K	3100							
	D82802434NO-9SWCS A050WC0250	2600-2800K	2650	>95	280	24	1.05	25	50	
	D82802434NO-9WWCS A050WC0250	2800-3200K	2700							
	D82802434NO-9NWCS A050WC0250	3800-4200K	2750							
	D82802434NO-9DWCS A050WC0250	4800-5200K	2750							
D8420-24V -59mm	D84202459NO-8LWCS A050WC0250	2200-2400K	3500	>80	420	24	1.25	30	50	LE9435 LS7977 LT120
	D84202459NO-8SWCS A050WC0250	2600-2800K	3700							
	D84202459NO-8WWCS A050WC0250	2800-3200K	3800							
	D84202459NO-8NWCS A050WC0250	3800-4200K	3900							
	D84202459NO-8DWCS A050WC0250	4800-5200K	3900							
	D84202459NO-8WCSA 050WC0250	5800-6500K	3700							
	D84202459NO-9SWCS A050WC0250	2600-2800K	3150	>95	420	24	1.25	30	50	
	D84202459NO-9WWCS A050WC0250	2800-3200K	3250							
	D84202459NO-9NWCS A050WC0250	3800-4200K	3300							
	D84202459NO-9DWCS A050WC0250	4800-5200K	3300							

### Performance Parameter (3):

Series ( Length )	Order No.	CCT	Lumen ( Lm/PC )	CRI	LED Beads (Pcs/M)	Voltage ( V )	Rated Current ( A/M )	Rated Power ( W/M )	Cutting ( mm/Unit )	Suitable for
D8560-24V -85mm	D85602485NO-8LW CSA050WC0250	2200-2400K	4550	> 80	560	24	1.67	40	50	LS12335 LS10570
	D85602485NO-8SW CSA050WC0250	2600-2800K	4800							
	D85602485NO-8W WCSA050WC0250	2800-3200K	4900							
	D85602485NO-8NW CSA050WC0250	3800-4200K	5050							
	D85602485NO-8DW CSA050WC0250	4800-5200K	5050							
	D85602485NO-8WC SA050WC0250	5800-6500K	4800							
	D85602485NO-9SW CSA050WC0250	2600-2800K	4100	> 95	560	24	1.67	40	50	
	D85602485NO-9W WCSA050WC0250	2800-3200K	4150							
	D85602485NO-9NW CSA050WC0250	3800-4200K	4300							
	D85602485NO-9DW CSA050WC0250	4800-5200K	4300							
D8560SWW-24 V-34mm	D85602434NO-8S WWCSA012C0250	2700-6000K	1700 ( 2700K )	> 80	560	24	1.04	25	50	LS5470 LS5470(F) LE6935 LE6935(F) LR5535(A) LR5535(B)
			1650 ( 6000K )							

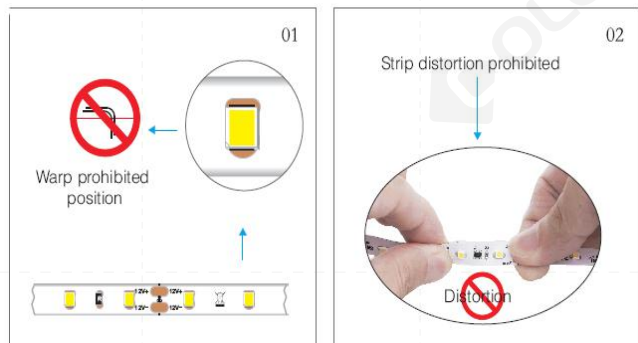
**Package :**



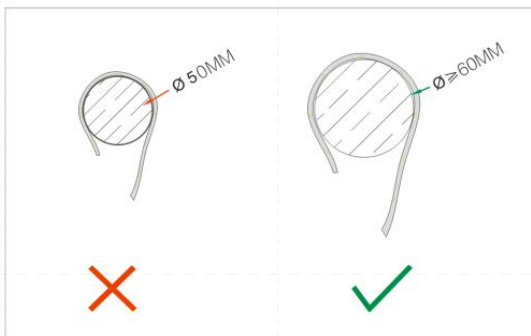
Type	Specification of Reel		Specification of Interior Box		Specification of Exterior Box		N.W	G.W
	Size	Qty	Size	Qty	Size	Qty		
D8280-24V-15mm	155*22.6mm	2.5M/reel	220*245*0.16mm	1reel/pack	410*410*260mm	36pack/box	5.22Kg	6.11 Kg
D8280-24V-20mm	155*27.6mm	2.5M/reel	220*245*0.16mm	1reel/pack	410*410*260mm	30pack/box	4.49 Kg	5.31 Kg
D8280-24V-34mm	155*41.6mm	2.5M/reel	220*245*0.16mm	1reel/pack	410*410*260mm	20pack/box	3.81 Kg	4.65 Kg
D8420-24V-59mm	155*66.6mm	2.5M/reel	300*320*0.16mm	1reel/pack	410*410*260mm	10pack/box	2.87 Kg	3.6 Kg
D8560-24V-85mm	155*92.6mm	2.5M/reel	300*320*0.16mm	1reel/pack	410*410*260mm	8pack/box	3.01 Kg	3.72 Kg
D8560SWW-24V-34mm	155*41.6mm	2.5M/reel	220*245*0.16mm	1reel/pack	410*410*260mm	20pack/box	3.81 Kg	4.65 Kg

## Precautions :

### Do not bend



### The diameter of reel



## Troubleshooting

NO.	Problem	Cause	Solutions
1	All LED strips are not lit or the colors cannot be changed	No power in switch power supply	Make sure the power is on
		The electrode of strip is connected reversely	Connect the strip to the electrode of power supply correctly
		Short circuit of exterior power supply, Automatic short-circuit protection of switch power supply	Detect the short circuit faults, repower the LED
		The fuse of power supply is burned	Change the fuse
2	Some strips are not lit or parts of the colors cannot be changed	No power in parts of the switch power supply	Check the power system and detect the faults
		Something wrong with the circuit in some strips	Check the power system and detect the faults
3	Inconsistent brightness of LED or the LED is not bright enough	Overload of power supply	Add power supplies
		Too much loss in switch power supply circuit	Thicken the wire or adjust the position of power supply (make it closer to the strip), make sure the voltage of every 5m strip is higher than the 95% of rated voltage
4	Some LED beads are not lit	Static breakdown	Check the related electrical appliances and make sure the LED is connected to the earth wire correctly, change the LED beads
		Faradic electricity breakdown of equipment or electricity leakage	Check the related electrical appliances and make sure the LED is connected to the earth wire correctly, change the LED beads

## Disclaimer

- ◆ Please make sure the LED strip is driven by 24VDC isolated power supply and the ripple of the constant voltage source must be less than 5%. Do not use RC buck or non-isolated power supply to drive the LED strip.
- ◆ To ensure the long life span and stability of strip, please do not make the bending diameter under 60mm or fold the strip to prevent the LED beads and strip from damage.
- ◆ To ensure the long life span of strip, please do not pull the power supply wire hard during using and make sure the strip is protected from impact to keep the LED beads safe.
- ◆ Do not confuse the anode with the cathode during installation and make sure the power supply match the voltage of product to prevent the strip from damage.
- ◆ The LED strip should be kept in a dry and sealed place for a period that lasts not too long. Please unpacking the strip before using.  
Working temperature: -20℃ ~+45℃, storage temperature: -0℃ ~ +60℃
- ◆ Do not touch the AC power supply when the power is on or there is a risk of electric shock.
- ◆ The power supply should retain a margin of 20% during using (it's recommended to use only 80% of the power) to make sure there is enough voltage to drive the strip.
- ◆ Do not use any acid or alkaline glue (not including glass glue) to fix the product.

